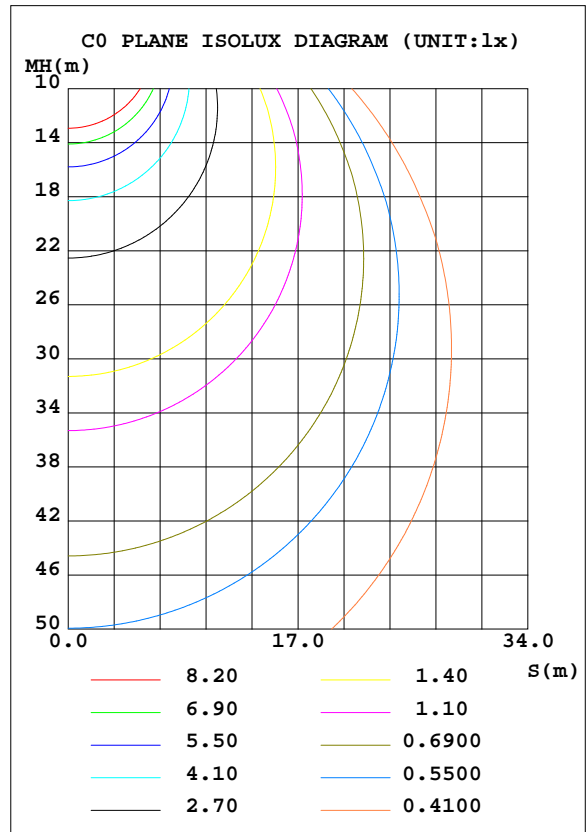
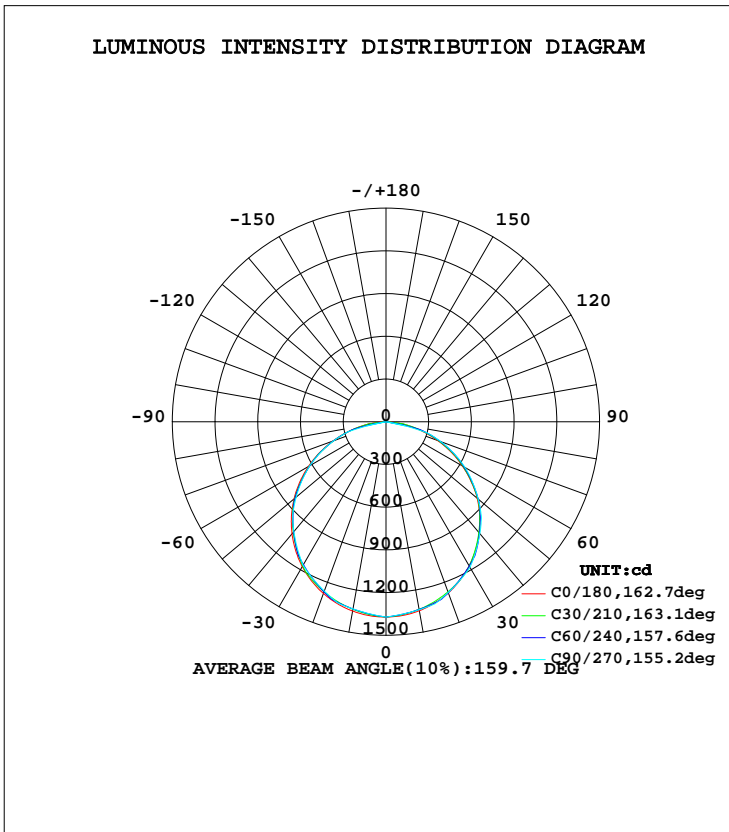


LUMINAIRE PHOTOMETRIC TEST REPORT

Test:U:230.0V I:0.1371A P:30.80W PF:0.9772 Lamp Flux:3941.67x1 lm		
NAME: IL-PN595 4.000K	TYPE:	WEIGHT:
SPEC.:	DIM.:	SERIAL No.:
MFR.: EVERFINE	SUR.:550*550	PROTECTION ANGLE:

DATA OF LAMP		PHOTOMETRIC DATA Eff: 127.97 lm/W			
MODEL	IL-PN595 4.000K	I <sub>max</sub> (cd)	1372	S/MH(C0/180)	1.27
NOMINAL POWER(W)	30	LOR(%)	100.0	S/MH(C90/270)	1.26
RATED VOLTAGE(V)	230	TOTAL FLUX(lm)	3941.7	η UP, DN(C0-180)	0.0, 50.4
NOMINAL FLUX(lm)	3941.67	CIE CLASS	DIRECT	η UP, DN(C180-360)	0.0, 49.6
LAMPS INSIDE	1	η up(%)	0.0	CIBSE SHR NOM	1.25
TEST VOLTAGE(V)	230	η down(%)	100.0	CIBSE SHR MAX	1.35



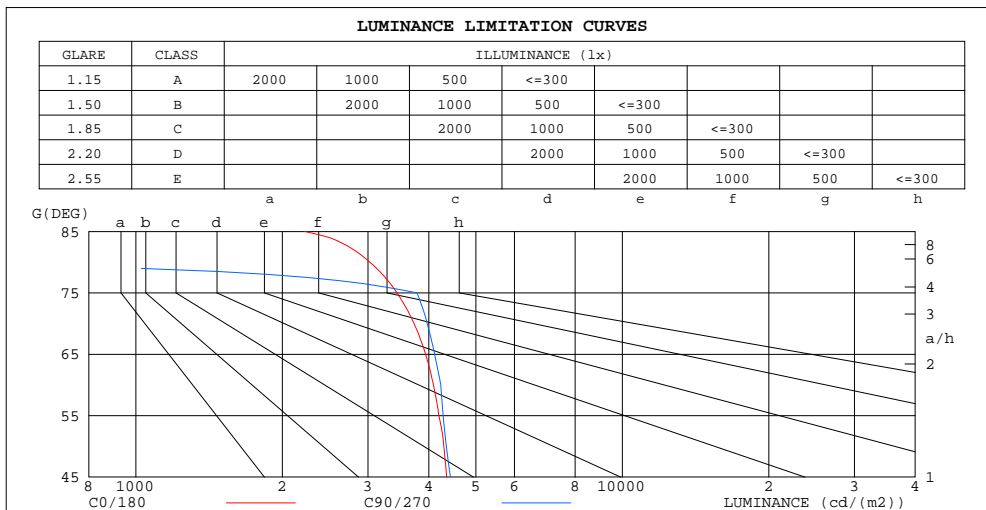
C Range: 0 - 360DEG  
 C Interval: 5.0DEG  
 Test Speed: HIGH  
 Temperature:25.3DEG  
 Operators:DAMIN  
 Test Date:2023-08-08

γ Range: 0 - 90DEG  
 γ Interval: 0.5DEG  
 Test System:EVERFINE GO-2000A\_V1 SYSTEM V2.0.286  
 Humidity:65.0%  
 Test Distance:13.420m [K=1.0000]  
 Remarks: IL-PN595 4.000K

ZONAL FLUX DIAGRAM  
AND LUMINANCE LIMITATION CURVES

ZONAL FLUX DIAGRAM:

γ	C0	C45	C90	C135	C180	C225	C270	C315	γ	Φ zone	Φ total	lum, lamp
5	1365	1357	1356	1358	1367	1356	1353	1355	0- 5	32.59	32.59	0.83,0.83
10	1348	1337	1340	1340	1350	1336	1335	1333	5- 10	96.43	129.0	3.27,3.27
15	1319	1312	1325	1315	1322	1309	1317	1306	10- 15	157.3	286.3	7.26,7.26
20	1279	1281	1277	1286	1284	1278	1266	1273	15- 20	213.3	499.7	12.7,12.7
25	1229	1226	1229	1232	1235	1223	1215	1217	20- 25	261.9	761.6	19.3,19.3
30	1169	1164	1181	1170	1175	1159	1165	1153	25- 30	302.3	1064	27,27
35	1098	1098	1103	1104	1106	1092	1085	1085	30- 35	333.2	1397	35.4,35.4
40	1019	1027	1025	1032	1027	1019	1006	1012	35- 40	352.4	1749	44.4,44.4
45	931.2	932.8	947.9	939.1	939.2	924.8	927.1	917.4	40- 45	360.5	2110	53.5,53.5
50	835.6	837.7	845.5	845.2	843.1	829.7	823.9	821.8	45- 50	357.1	2467	62.6,62.6
55	728.3	741.8	743.0	748.4	739.9	731.4	720.8	725.1	50- 55	340.7	2808	71.2,71.2
60	618.7	627.8	640.6	632.4	629.7	617.5	617.6	610.8	55- 60	313.2	3121	79.2,79.2
65	503.8	515.9	525.8	519.8	515.5	505.1	504.3	498.6	60- 65	275.8	3397	86.2,86.2
70	386.0	402.5	410.9	406.0	398.1	392.2	390.9	385.8	65- 70	229.4	3626	92,92
75	269.5	287.0	296.1	290.5	281.0	278.6	277.6	272.1	70- 75	176.7	3803	96.5,96.5
80	159.0	152.2	0	155.1	170.9	146.7	0	141.4	75- 80	107.2	3910	99.2,99.2
85	58.66	0	0	0	69.72	0	0	0	80- 85	29.06	3939	99.9,99.9
90	0.6158	0	0	0	1.302	0	0	0	85- 90	2.534	3942	100,100
95									90- 95			
100									95-100			
105									100-105			
110									105-110			
115									110-115			
120									115-120			
125									120-125			
130									125-130			
135									130-135			
140									135-140			
145									140-145			
150									145-150			
155									150-155			
160									155-160			
165									160-165			
170									165-170			
175									170-175			
180									175-180			
DEG	LUMINOUS INTENSITY:cd									UNIT:lm		



LUMINANCE cd/(m2)		
G(DEG)	C0/180	C90/270
85	2225	0
80	3026	0
75	3443	3782
70	3731	3972
65	3941	4113
60	4091	4235
55	4198	4282
50	4297	4348
45	4354	4431

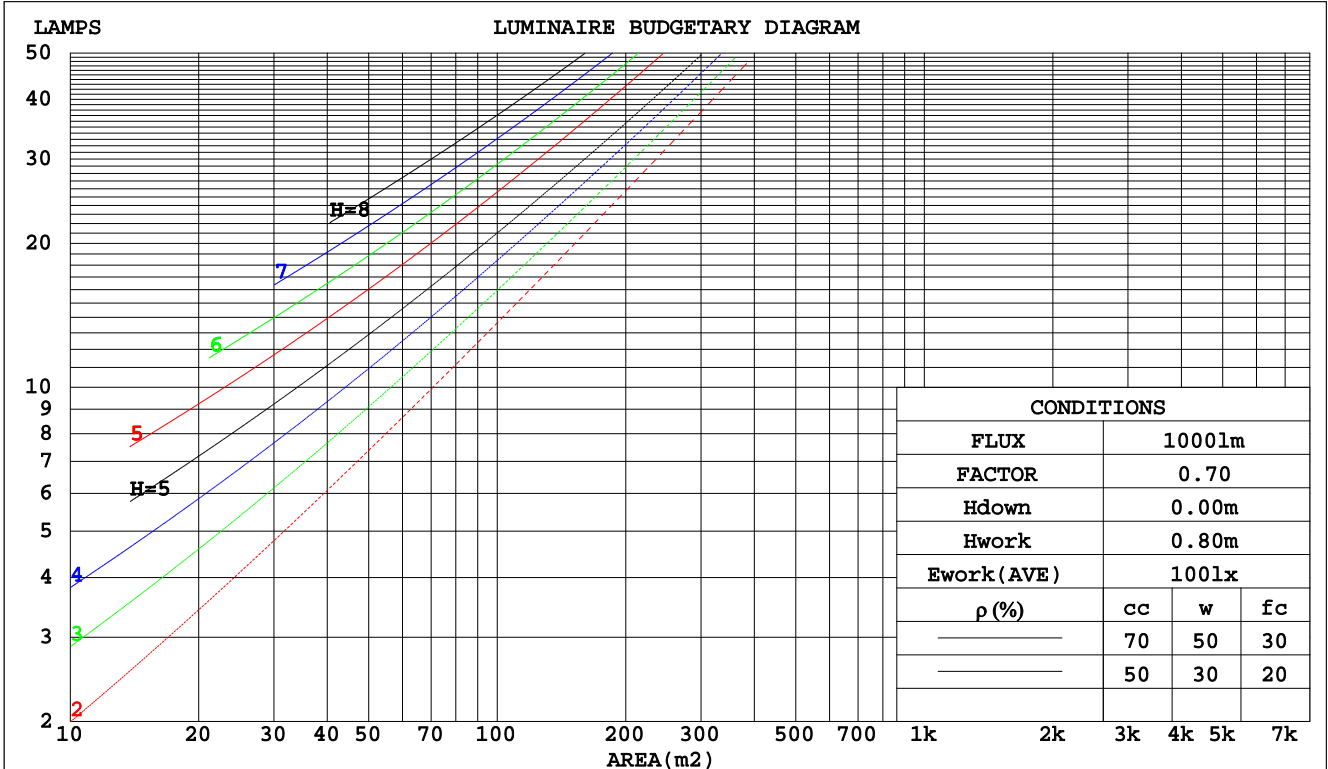
C Range: 0 - 360DEG  
C Interval: 5.0DEG  
Test Speed: HIGH  
Temperature:25.3DEG  
Operators:DAMIN  
Test Date:2023-08-08

γ Range: 0 - 90DEG  
γ Interval: 0.5DEG  
Test System:EVERFINE GO-2000A\_V1 SYSTEM V2.0.286  
Humidity:65.0%  
Test Distance:13.420m [K=1.0000]  
Remarks: IL-PN595 4.000K

CU AND LUMINAIRE BUDGETARY ESTIMATE DIAGRAM

Test:U:230.0V I:0.1371A P:30.80W PF:0.9772 Lamp Flux:3941.67x1 lm		
NAME: IL-PN595 4.000K	TYPE:	WEIGHT:
SPEC.:	DIM.:	SERIAL No.:
MFR.: EVERFINE	SUR.:550*550	PROTECTION ANGLE:

pcc	80%			70%			50%			30%			10%			0
	50%	30%	10%	50%	30%	10%	50%	30%	10%	50%	30%	10%	50%	30%	10%	0
pw																0
pfc	20%			20%			20%			20%			20%			0
RCR	RCR:Room Cavity Ratio															
	Coefficients of Utilization(CU)															
0.0	1.19	1.19	1.19	1.16	1.16	1.16	1.11	1.11	1.11	1.06	1.06	1.06	1.02	1.02	1.02	.00
1.0	1.04	1.00	.96	1.02	.98	.95	.98	.95	.92	.94	.91	.89	.90	.88	.86	.84
2.0	.91	.84	.78	.89	.83	.77	.85	.80	.76	.82	.78	.74	.79	.75	.72	.70
3.0	.80	.71	.65	.78	.70	.64	.75	.68	.63	.72	.67	.62	.70	.65	.61	.59
4.0	.70	.62	.55	.69	.61	.54	.67	.59	.54	.64	.58	.53	.62	.57	.52	.50
5.0	.63	.54	.47	.62	.53	.47	.60	.52	.46	.58	.51	.46	.56	.50	.45	.43
6.0	.56	.47	.41	.55	.47	.41	.54	.46	.40	.52	.45	.40	.50	.44	.40	.38
7.0	.51	.42	.36	.50	.42	.36	.49	.41	.36	.47	.40	.35	.46	.40	.35	.33
8.0	.47	.38	.32	.46	.38	.32	.45	.37	.32	.43	.37	.32	.42	.36	.31	.30
9.0	.43	.34	.29	.42	.34	.29	.41	.34	.29	.40	.33	.28	.39	.33	.28	.27
10.0	.39	.31	.26	.39	.31	.26	.38	.31	.26	.37	.30	.26	.36	.30	.26	.24



C Range: 0 - 360DEG  
 C Interval: 5.0DEG  
 Test Speed: HIGH  
 Temperature:25.3DEG  
 Operators:DAMIN  
 Test Date:2023-08-08

γ Range: 0 - 90DEG  
 γ Interval: 0.5DEG  
 Test System:EVERFINE GO-2000A\_V1 SYSTEM V2.0.286  
 Humidity:65.0%  
 Test Distance:13.420m [K=1.0000]  
 Remarks: IL-PN595 4.000K

WEC AND CCEC

Test:U:230.0V I:0.1371A P:30.80W PF:0.9772 Lamp Flux:3941.67x1 lm		
NAME: IL-PN595 4.000K	TYPE:	WEIGHT:
SPEC.:	DIM.:	SERIAL No.:
MFR.: EVERFINE	SUR.:550*550	PROTECTION ANGLE:

ρcc	80%			70%			50%			30%			10%			0
ρw	50%	30%	10%	50%	30%	10%	50%	30%	10%	50%	30%	10%	50%	30%	10%	0
ρfc	20%			20%			20%			20%			20%			0
RCR	RCR:Room Cavity Ratio						Wall Exitance Coefficients(WEC)									
0.0																
1.0	.301	.171	.054	.294	.168	.053	.281	.161	.051	.269	.155	.050	.258	.149	.048	
2.0	.289	.158	.049	.282	.156	.048	.271	.151	.047	.260	.146	.046	.250	.141	.045	
3.0	.269	.143	.043	.263	.141	.042	.253	.137	.042	.243	.133	.041	.234	.130	.040	
4.0	.249	.129	.038	.244	.128	.038	.235	.124	.037	.226	.121	.037	.218	.119	.036	
5.0	.230	.117	.034	.226	.116	.034	.218	.113	.033	.210	.111	.033	.203	.109	.033	
6.0	.214	.107	.031	.210	.106	.031	.203	.104	.030	.196	.102	.030	.190	.100	.030	
7.0	.199	.098	.028	.196	.097	.028	.189	.096	.028	.183	.094	.027	.177	.092	.027	
8.0	.186	.091	.026	.183	.090	.025	.177	.088	.025	.172	.087	.025	.166	.085	.025	
9.0	.174	.084	.024	.172	.084	.023	.166	.082	.023	.161	.081	.023	.157	.080	.023	
10.0	.164	.079	.022	.161	.078	.022	.157	.077	.022	.152	.076	.021	.148	.074	.021	

ρcc	80%			70%			50%			30%			10%			0
ρw	50%	30%	10%	50%	30%	10%	50%	30%	10%	50%	30%	10%	50%	30%	10%	0
ρfc	20%			20%			20%			20%			20%			0
RCR	RCR:Room Cavity Ratio						Ceiling Cavity Exitance Coefficients(CCEC)									
0.0	.190	.190	.190	.163	.163	.163	.111	.111	.111	.064	.064	.064	.020	.020	.020	
1.0	.180	.156	.135	.154	.134	.116	.105	.092	.080	.061	.053	.047	.019	.017	.015	
2.0	.172	.132	.098	.147	.114	.085	.101	.079	.059	.058	.046	.035	.019	.015	.011	
3.0	.164	.114	.074	.141	.099	.065	.097	.068	.045	.056	.040	.027	.018	.013	.009	
4.0	.157	.101	.058	.134	.087	.051	.092	.061	.036	.054	.036	.021	.017	.012	.007	
5.0	.149	.091	.047	.128	.078	.041	.088	.055	.029	.051	.032	.017	.016	.010	.006	
6.0	.142	.082	.039	.122	.071	.034	.084	.050	.024	.049	.029	.014	.016	.010	.005	
7.0	.135	.075	.033	.117	.065	.029	.081	.046	.020	.047	.027	.012	.015	.009	.004	
8.0	.129	.070	.029	.111	.060	.025	.077	.042	.018	.045	.025	.011	.014	.008	.003	
9.0	.123	.065	.025	.106	.056	.022	.073	.039	.016	.043	.023	.009	.014	.008	.003	
10.0	.117	.060	.022	.101	.052	.020	.070	.037	.014	.041	.022	.008	.013	.007	.003	

C Range: 0 - 360DEG  
 C Interval: 5.0DEG  
 Test Speed: HIGH  
 Temperature:25.3DEG  
 Operators:DAMIN  
 Test Date:2023-08-08

γ Range: 0 - 90DEG  
 γ Interval: 0.5DEG  
 Test System:EVERFINE GO-2000A\_V1 SYSTEM V2.0.286  
 Humidity:65.0%  
 Test Distance:13.420m [K=1.0000]  
 Remarks: IL-PN595 4.000K

UGR(Unified Glare Rating) Table

Test:U:230.0V I:0.1371A P:30.80W PF:0.9772 Lamp Flux:3941.67x1 lm										
NAME: IL-PN595 4.000K					TYPE:			WEIGHT:		
SPEC.:					DIM.:			SERIAL No.:		
MFR.: EVERFINE					SUR.:550*550			PROTECTION ANGLE:		
ceiling/cavity	0.7	0.7	0.5	0.5	0.3	0.7	0.7	0.5	0.5	0.3
walls	0.5	0.3	0.5	0.3	0.3	0.5	0.3	0.5	0.3	0.3
working plane	0.2	0.2	0.2	0.2	0.2	0.2	0.2	0.2	0.2	0.2
Room dimensions	Viewed crosswise					Viewed endwise				
x = 2H y = 2H	17.9	19.5	18.2	19.7	19.9	18.1	19.6	18.3	19.8	20.0
3H	19.5	20.9	19.8	21.1	21.3	19.7	21.1	20.0	21.3	21.6
4H	20.1	21.4	20.4	21.7	21.9	20.4	21.7	20.7	21.9	22.2
6H	20.5	21.7	20.8	22.0	22.3	20.4	21.7	20.8	22.0	22.2
8H	20.6	21.8	20.9	22.1	22.4	20.4	21.6	20.7	21.9	22.2
12H	20.6	21.8	21.0	22.1	22.4	20.3	21.5	20.7	21.8	22.1
4H 2H	18.6	19.9	18.9	20.2	20.4	18.7	20.0	19.0	20.3	20.5
3H	20.3	21.5	20.7	21.8	22.1	20.5	21.7	20.9	22.0	22.3
4H	21.0	22.1	21.4	22.4	22.8	21.3	22.4	21.7	22.7	23.0
6H	21.6	22.5	22.0	22.9	23.2	21.4	22.4	21.8	22.7	23.1
8H	21.7	22.6	22.1	23.0	23.4	21.4	22.3	21.8	22.6	23.0
12H	21.8	22.6	22.2	23.0	23.4	21.3	22.1	21.8	22.5	22.9
8H 4H	21.4	22.2	21.8	22.6	23.0	21.6	22.5	22.0	22.8	23.2
6H	22.0	22.8	22.5	23.2	23.6	21.7	22.5	22.2	22.9	23.3
8H	22.3	22.9	22.7	23.4	23.8	21.7	22.4	22.2	22.8	23.2
12H	22.4	23.0	22.9	23.4	23.9	21.7	22.2	22.1	22.7	23.1
12H 4H	21.3	22.1	21.8	22.5	22.9	21.6	22.4	22.0	22.8	23.2
6H	22.0	22.7	22.5	23.1	23.6	21.8	22.4	22.2	22.8	23.3
8H	22.3	22.9	22.8	23.3	23.8	21.7	22.3	22.2	22.7	23.2
Variations with the observer position at spacings:										
S = 1.0H	+ 0.1 / - 0.2					+ 0.2 / - 0.2				
1.5H	+ 0.2 / - 0.3					+ 0.1 / - 0.2				
2.0H	+ 0.2 / - 0.3					+ 0.2 / - 0.4				

CIE Pub.117 Corrected 3942 lm Total Lamp Luminous Flux.(8log(F/F0) = 4.8)

C Range: 0 - 360DEG  
 C Interval: 5.0DEG  
 Test Speed: HIGH  
 Temperature:25.3DEG  
 Operators:DAMIN  
 Test Date:2023-08-08

γ Range: 0 - 90DEG  
 γ Interval: 0.5DEG  
 Test System:EVERFINE GO-2000A\_V1 SYSTEM V2.0.286  
 Humidity:65.0%  
 Test Distance:13.420m [K=1.0000]  
 Remarks: IL-PN595 4.000K

UTILIZATION FACTORS TABLE

Test:U:230.0V I:0.1371A P:30.80W PF:0.9772 Lamp Flux:3941.67x1 lm		
NAME: IL-PN595 4.000K	TYPE:	WEIGHT:
SPEC.:	DIM.:	SERIAL No.:
MFR.: EVERFINE	SUR.:550*550	PROTECTION ANGLE:

REFLECTANCE										
Ceiling	0.8	0.8	0.8	0.7	0.7	0.7	0.5	0.5	0.5	0
Walls	0.7	0.5	0.3	0.7	0.5	0.3	0.7	0.5	0.3	0
Working plane	0.2	0.2	0.2	0.2	0.2	0.2	0.2	0.2	0.2	0
ROOM INDEX	UTILIZATION FACTORS(PERCENT) $k(RI) \times RCR = 5$									
k = 0.60	57	46	39	57	45	39	55	45	38	32
0.80	67	56	48	66	55	48	65	55	48	41
1.00	76	65	58	75	64	57	73	66	57	50
1.25	83	73	66	82	72	65	79	70	64	57
1.50	88	78	71	87	77	71	84	76	70	62
2.00	95	87	80	93	85	79	90	83	78	70
2.50	99	91	85	97	90	85	93	87	83	74
3.00	103	96	90	100	94	89	96	91	87	79
4.00	107	101	96	104	99	95	100	96	92	84
5.00	109	104	100	107	102	99	102	99	96	87
ROOM INDEX	UF(total)									Direct
According to DIN EN 13032-2 2004			Suspended				SHRNOM = 1.25			

C Range: 0 - 360DEG  
 C Interval: 5.0DEG  
 Test Speed: HIGH  
 Temperature:25.3DEG  
 Operators:DAMIN  
 Test Date:2023-08-08

$\gamma$  Range: 0 - 90DEG  
 $\gamma$  Interval: 0.5DEG  
 Test System:EVERFINE GO-2000A\_V1 SYSTEM V2.0.286  
 Humidity:65.0%  
 Test Distance:13.420m [K=1.0000]  
 Remarks: IL-PN595 4.000K

ISOCANDELA DIAGRAM

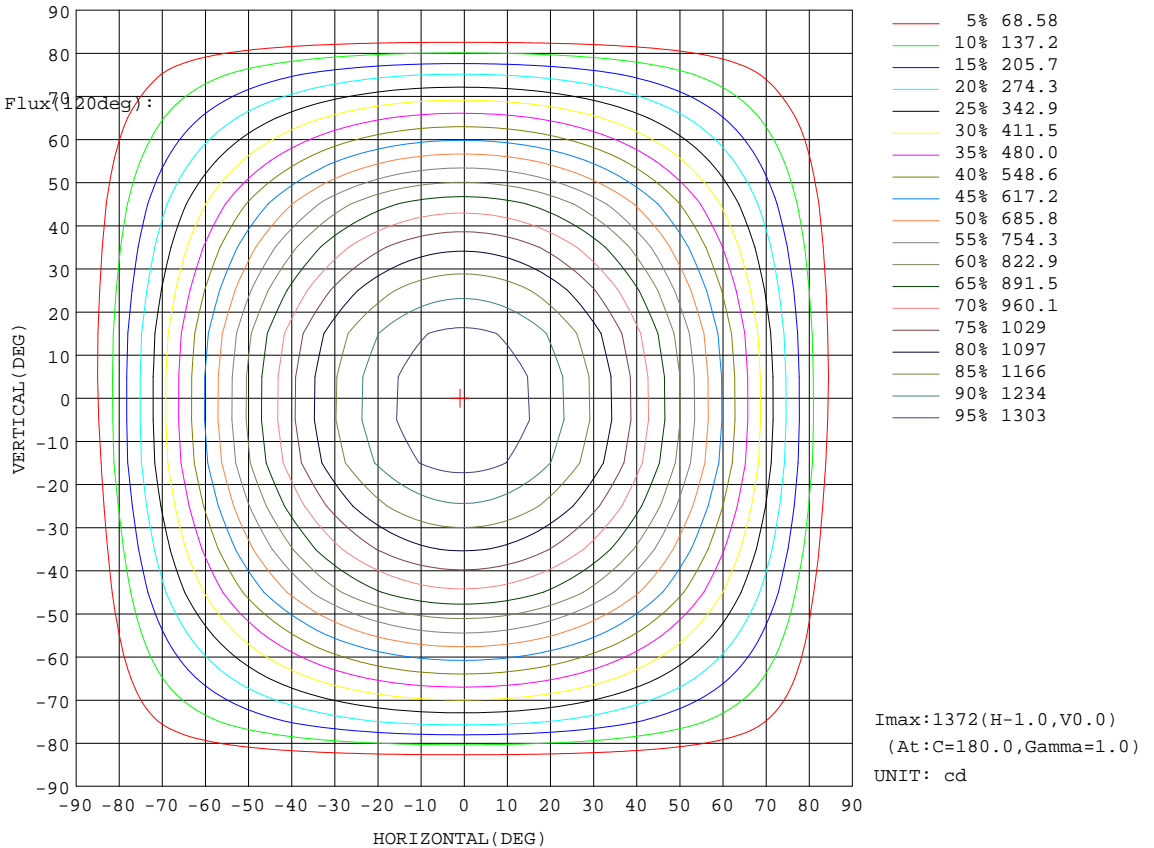
Test:U:230.0V I:0.1371A P:30.80W PF:0.9772 Lamp Flux:3941.67x1 lm		
NAME: IL-PN595 4.000K	TYPE:	WEIGHT:
SPEC.:	DIM.:	SERIAL No.:
MFR.: EVERFINE	SUR.:550*550	PROTECTION ANGLE:

Conical surface Flux(90deg):

2110 lm  
%lum = 53.5%  
%lamp = 53.5%

Conical surface Flux(70deg):

3120.9 lm  
%lum = 79.2%  
%lamp = 79.2%

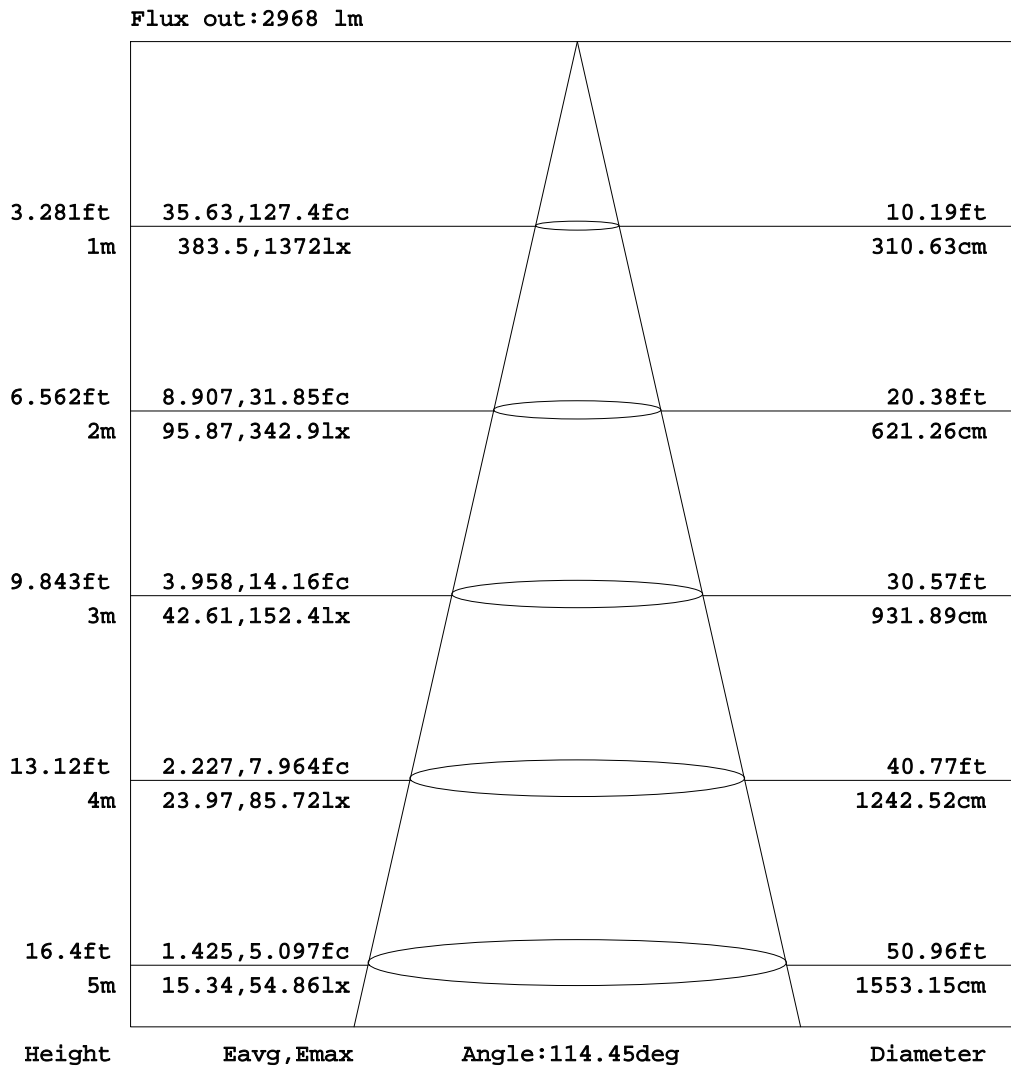


C Range: 0 - 360DEG  
C Interval: 5.0DEG  
Test Speed: HIGH  
Temperature:25.3DEG  
Operators:DAMIN  
Test Date:2023-08-08

γ Range: 0 - 90DEG  
γ Interval: 0.5DEG  
Test System:EVERFINE GO-2000A\_V1 SYSTEM V2.0.286  
Humidity:65.0%  
Test Distance:13.420m [K=1.0000]  
Remarks: IL-PN595 4.000K

**AAI Figure**

Test:U:230.0V I:0.1371A P:30.80W PF:0.9772 Lamp Flux:3941.67x1 lm		
NAME: IL-PN595 4.000K	TYPE:	WEIGHT:
SPEC.:	DIM.:	SERIAL No.:
MFR.: EVERFINE	SUR.:550*550	PROTECTION ANGLE:



Note:The Curves indicate the illuminated area and the average illumination when the luminaire is at different distance.

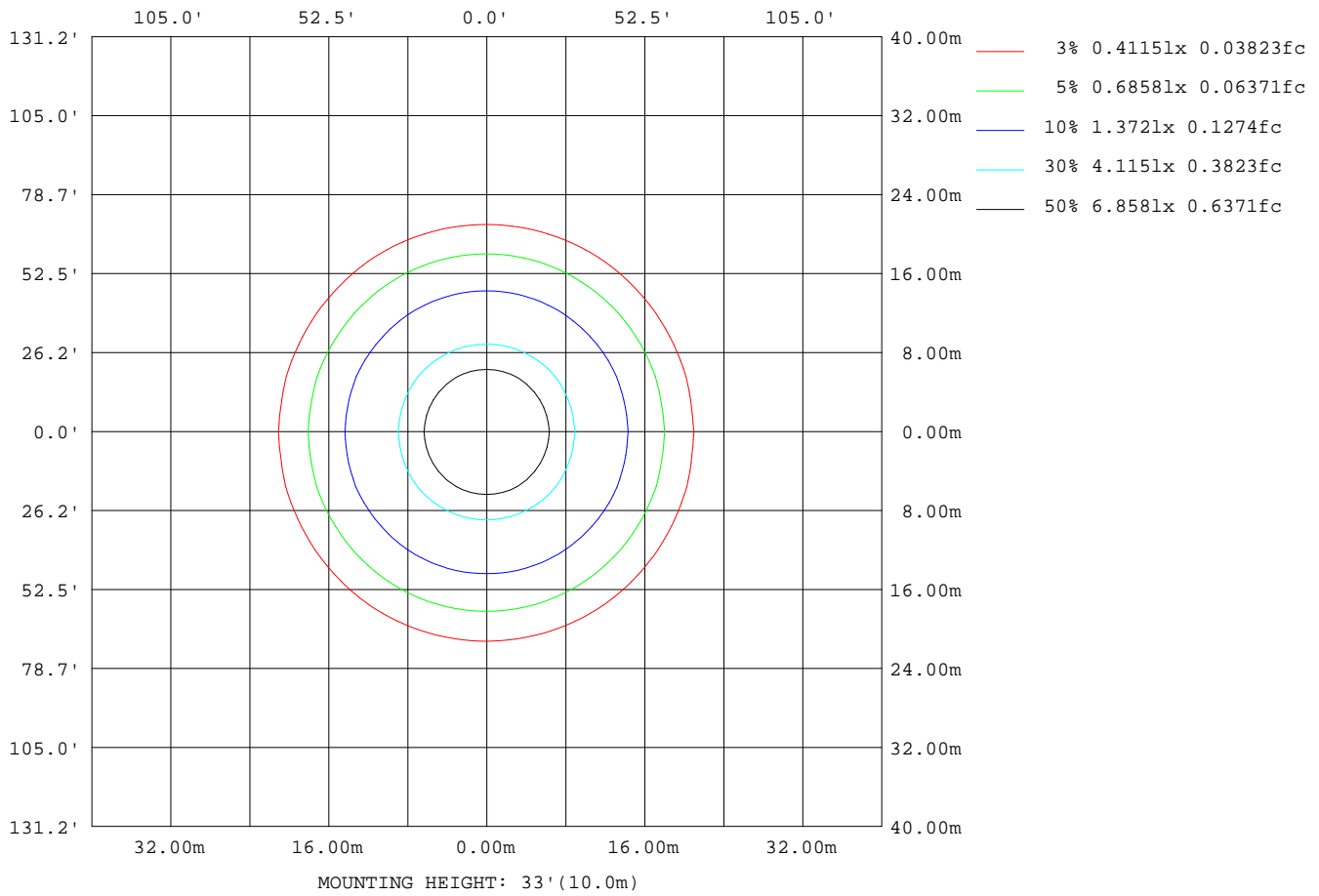
C Range: 0 - 360DEG  
 C Interval: 5.0DEG  
 Test Speed: HIGH  
 Temperature:25.3DEG  
 Operators:DAMIN  
 Test Date:2023-08-08

γ Range: 0 - 90DEG  
 γ Interval: 0.5DEG  
 Test System:EVERFINE GO-2000A\_V1 SYSTEM V2.0.286  
 Humidity:65.0%  
 Test Distance:13.420m [K=1.0000]  
 Remarks: IL-PN595 4.000K



**ISOLUX DIAGRAM**

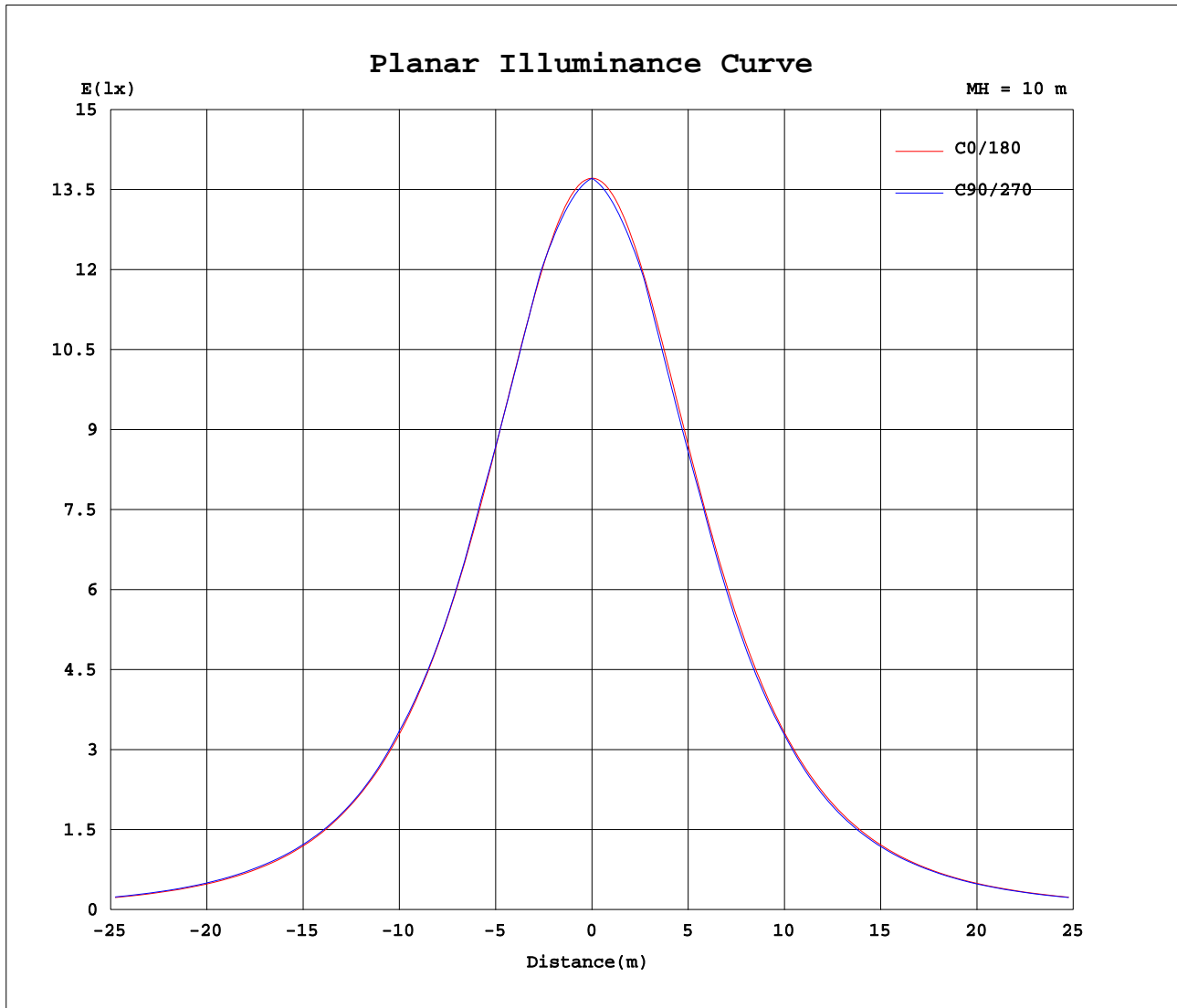
Test:U:230.0V I:0.1371A P:30.80W PF:0.9772 Lamp Flux:3941.67x1 lm		
NAME: IL-PN595 4.000K	TYPE:	WEIGHT:
SPEC.:	DIM.:	SERIAL No.:
MFR.: EVERFINE	SUR.:550*550	PROTECTION ANGLE:



C Range: 0 - 360DEG  
 C Interval: 5.0DEG  
 Test Speed: HIGH  
 Temperature:25.3DEG  
 Operators:DAMIN  
 Test Date:2023-08-08

$\gamma$  Range: 0 - 90DEG  
 $\gamma$  Interval: 0.5DEG  
 Test System:EVERFINE GO-2000A\_V1 SYSTEM V2.0.286  
 Humidity:65.0%  
 Test Distance:13.420m [K=1.0000]  
 Remarks: IL-PN595 4.000K

Planar Illuminance Curve



C Range: 0 - 360DEG  
 C Interval: 5.0DEG  
 Test Speed: HIGH  
 Temperature: 25.3DEG  
 Operators: DAMIN  
 Test Date: 2023-08-08

γ Range: 0 - 90DEG  
 γ Interval: 0.5DEG  
 Test System: EVERFINE GO-2000A\_V1 SYSTEM V2.0.286  
 Humidity: 65.0%  
 Test Distance: 13.420m [K=1.0000]  
 Remarks: IL-PN595 4.000K



LUMINOUS DISTRIBUTION INTENSITY DATA

Test:U:230.0V I:0.1371A P:30.80W PF:0.9772 Lamp Flux:3941.67x1 lm		
NAME: IL-PN595 4.000K	TYPE:	WEIGHT:
SPEC.:	DIM.:	SERIAL No.:
MFR.: EVERFINE	SUR.:550*550	PROTECTION ANGLE:

Table--2

UNIT: cd

C( DEG) γ (DEG)	95	100	105	110	115	120	125	130	135	140	145	150	155	160	165	170	175	180	185
0	1372	1372	1372	1372	1372	1372	1372	1372	1372	1372	1372	1372	1372	1372	1372	1372	1372	1372	1372
5	1356	1356	1356	1357	1357	1357	1357	1358	1358	1359	1359	1360	1361	1362	1363	1364	1365	1367	1365
10	1340	1341	1341	1340	1340	1340	1340	1340	1340	1340	1340	1340	1341	1342	1344	1345	1348	1350	1347
15	1325	1325	1324	1323	1322	1320	1318	1317	1315	1314	1313	1312	1312	1313	1314	1316	1319	1322	1318
20	1277	1278	1278	1279	1280	1282	1284	1286	1286	1283	1279	1277	1275	1274	1275	1276	1279	1284	1279
25	1229	1229	1229	1229	1228	1228	1229	1230	1232	1235	1239	1234	1229	1227	1226	1227	1230	1235	1228
30	1181	1180	1179	1177	1175	1173	1171	1170	1170	1173	1177	1176	1170	1167	1167	1170	1175	1168	
35	1103	1104	1105	1106	1107	1110	1112	1108	1104	1102	1101	1103	1107	1106	1100	1098	1100	1106	1098
40	1026	1026	1026	1025	1025	1026	1027	1029	1032	1029	1025	1023	1024	1029	1025	1020	1021	1027	1019
45	948	948	947	945	943	941	940	939	939	941	945	938	935	937	943	934	933	939	931
50	846	847	847	848	850	853	852	848	845	842	843	847	843	840	844	841	837	843	836
55	743	743	743	743	744	744	745	747	748	742	739	739	743	738	737	739	733	740	731
60	641	640	640	639	637	636	635	634	632	633	636	630	628	633	626	629	624	630	623
65	526	526	526	526	526	526	525	523	520	518	517	519	516	514	516	512	512	516	510
70	411	411	411	411	410	409	408	407	406	405	402	400	400	400	397	396	398	398	396
75	296	297	296	296	295	294	293	292	290	289	288	286	284	283	283	280	281	281	280
80	2.21	8.81	19.7	34.6	53.1	75.0	99.6	127	155	178	177	176	175	173	168	164	163	171	169
85	0.00	0.00	0.00	0.00	0.00	0.00	0.00	0.00	0.00	0.00	0.00	0.00	34.1	66.3	68.3	59.6	51.2	69.7	70.0
90	0.00	0.00	0.00	0.00	0.00	0.00	0.00	0.00	0.00	0.00	0.00	0.00	0.00	0.00	0.00	0.00	0.00	1.30	0.00

C Range: 0 - 360DEG  
 C Interval: 5.0DEG  
 Test Speed: HIGH  
 Temperature:25.3DEG  
 Operators:DAMIN  
 Test Date:2023-08-08

γ Range: 0 - 90DEG  
 γ Interval: 0.5DEG  
 Test System:EVERFINE GO-2000A\_V1 SYSTEM V2.0.286  
 Humidity:65.0%  
 Test Distance:13.420m [K=1.0000]  
 Remarks: IL-PN595 4.000K



LUMINOUS DISTRIBUTION INTENSITY DATA

Test:U:230.0V I:0.1371A P:30.80W PF:0.9772 Lamp Flux:3941.67x1 lm		
NAME: IL-PN595 4.000K	TYPE:	WEIGHT:
SPEC.:	DIM.:	SERIAL No.:
MFR.: EVERFINE	SUR.:550*550	PROTECTION ANGLE:

Table--4

UNIT: cd

C( DEG) γ (DEG)	285	290	295	300	305	310	315	320	325	330	335	340	345	350	355				
0	1372	1372	1372	1372	1372	1372	1372	1372	1372	1372	1372	1372	1372	1372	1372				
5	1353	1353	1354	1354	1354	1355	1355	1356	1357	1358	1359	1360	1361	1362	1364				
10	1334	1334	1334	1333	1333	1333	1333	1334	1334	1335	1336	1338	1340	1342	1345				
15	1314	1313	1311	1310	1309	1307	1306	1305	1304	1304	1305	1306	1308	1311	1314				
20	1266	1266	1267	1269	1271	1273	1273	1270	1268	1266	1265	1265	1266	1269	1274				
25	1214	1213	1213	1213	1213	1215	1217	1220	1224	1220	1216	1215	1215	1218	1222				
30	1161	1160	1157	1155	1154	1153	1153	1153	1156	1161	1161	1156	1155	1156	1161				
35	1085	1086	1088	1090	1093	1089	1085	1083	1083	1085	1090	1090	1086	1086	1090				
40	1005	1004	1004	1004	1006	1008	1012	1010	1006	1004	1006	1012	1009	1007	1010				
45	923	922	920	918	916	916	917	921	925	920	917	919	925	919	921				
50	823	824	825	827	827	824	822	821	823	829	825	822	826	825	825				
55	719	719	719	719	720	722	725	722	719	720	723	719	719	725	720				
60	615	614	613	611	611	610	611	613	616	611	610	614	610	614	611				
65	503	503	502	502	502	500	499	498	498	500	498	497	500	497	498				
70	390	389	388	388	387	386	386	385	383	382	382	382	380	381	382				
75	276	276	275	275	274	273	272	271	270	269	267	266	267	266	266				
80	18.3	32.1	49.3	69.4	91.9	116	141	161	161	161	160	159	157	157	157				
85	0.00	0.00	0.00	0.00	0.00	0.00	0.00	0.00	0.00	0.00	29.6	56.2	58.2	59.8	58.4				
90	0.00	0.00	0.00	0.00	0.00	0.00	0.00	0.00	0.00	0.00	0.00	0.00	0.00	0.00	0.00				

C Range: 0 - 360DEG  
 C Interval: 5.0DEG  
 Test Speed: HIGH  
 Temperature:25.3DEG  
 Operators:DAMIN  
 Test Date:2023-08-08

γ Range: 0 - 90DEG  
 γ Interval: 0.5DEG  
 Test System:EVERFINE GO-2000A\_V1 SYSTEM V2.0.286  
 Humidity:65.0%  
 Test Distance:13.420m [K=1.0000]  
 Remarks: IL-PN595 4.000K

Photometric Data Table [cd]

G/C	0.0	5.0	10.0	15.0	20.0	25.0	30.0	35.0	40.0	45.0
0.0	1372	1372	1372	1372	1372	1372	1372	1372	1372	1372
2.5	1370	1369	1368	1368	1367	1367	1366	1366	1365	1365
5.0	1365	1364	1363	1362	1361	1360	1359	1358	1358	1357
7.5	1358	1356	1354	1353	1351	1350	1350	1349	1348	1348
10.0	1348	1345	1343	1341	1340	1339	1338	1338	1337	1337
12.5	1335	1331	1329	1327	1326	1325	1324	1324	1325	1325
15.0	1319	1315	1312	1310	1309	1309	1309	1309	1311	1312
17.5	1300	1296	1293	1291	1290	1290	1291	1293	1295	1298
20.0	1279	1274	1271	1269	1269	1270	1271	1274	1278	1281
22.5	1255	1250	1247	1245	1245	1247	1250	1254	1259	1256
25.0	1229	1223	1220	1219	1220	1222	1227	1232	1229	1226
27.5	1200	1194	1191	1190	1192	1196	1202	1200	1197	1196
30.0	1169	1162	1159	1159	1162	1168	1169	1165	1164	1164
32.5	1135	1128	1125	1126	1130	1137	1132	1130	1130	1132
35.0	1098	1091	1089	1091	1097	1098	1094	1094	1095	1098
37.5	1060	1053	1051	1054	1061	1057	1055	1056	1060	1065
40.0	1019	1012	1010	1014	1019	1015	1015	1017	1023	1027
42.5	976.2	968.5	967.7	973.4	973.4	971.1	973.1	978.3	983.5	979.9
45.0	931.2	923.4	923.4	930.7	926.9	926.6	930.7	938.5	934.6	932.8
47.5	884.2	876.4	877.4	883.4	879.2	881.0	887.9	888.1	885.3	885.1
50.0	835.6	827.5	829.7	831.9	830.6	835.0	840.7	836.6	835.9	837.7
52.5	784.3	777.0	780.4	779.4	779.2	788.7	786.7	784.8	786.3	790.1
55.0	728.3	722.7	729.7	726.2	728.0	734.3	732.4	732.9	736.7	741.8
57.5	674.3	668.8	676.9	671.8	677.0	676.7	677.7	681.3	686.5	684.6
60.0	618.7	613.9	619.0	616.9	623.5	620.4	623.1	629.6	628.2	627.8
62.5	561.8	557.8	560.7	561.9	564.2	564.3	570.0	570.8	570.4	571.5
65.0	503.8	500.7	502.0	507.1	505.5	509.0	512.4	511.8	513.4	515.9
67.5	445.1	443.3	443.6	447.9	447.7	453.7	452.6	454.0	457.1	460.9
70.0	386.0	385.3	385.9	387.3	390.7	392.9	394.1	397.4	401.2	402.5
72.5	327.4	326.9	329.7	328.8	332.4	334.3	337.4	340.7	342.7	344.4
75.0	269.5	268.1	271.3	273.2	274.4	277.9	281.1	283.2	285.2	287.0
77.5	213.2	211.7	212.7	215.9	219.6	223.0	225.2	227.2	228.8	230.4
80.0	159.0	156.3	155.1	160.4	166.6	169.3	171.1	172.4	173.4	152.2
82.5	108.4	95.20	99.12	108.5	115.0	117.8	115.1	84.32	52.48	20.61
85.0	58.66	45.42	54.18	62.61	61.33	32.40	0	0	0	0
87.5	11.55	17.61	18.44	0	0	0	0	0	0	0
90.0	0.6158	0	0	0	0	0	0	0	0	0
G/C	50.0	55.0	60.0	65.0	70.0	75.0	80.0	85.0	90.0	95.0
0.0	1372	1372	1372	1372	1372	1372	1372	1372	1372	1372
2.5	1365	1364	1364	1364	1364	1364	1364	1364	1364	1364
5.0	1357	1357	1356	1356	1356	1356	1356	1356	1356	1356
7.5	1348	1348	1348	1348	1348	1348	1348	1348	1348	1348
10.0	1338	1338	1338	1338	1339	1340	1340	1340	1340	1340
12.5	1326	1327	1328	1329	1330	1331	1332	1332	1333	1333
15.0	1314	1316	1318	1320	1321	1323	1324	1324	1325	1325
17.5	1300	1303	1305	1303	1302	1301	1301	1301	1301	1301
20.0	1282	1280	1279	1278	1277	1277	1277	1277	1277	1277
22.5	1254	1253	1252	1252	1252	1252	1252	1253	1253	1253
25.0	1225	1225	1225	1226	1226	1227	1228	1228	1229	1229
27.5	1196	1196	1198	1199	1201	1202	1203	1204	1205	1205
30.0	1165	1167	1170	1172	1175	1177	1179	1180	1181	1181
32.5	1134	1138	1142	1145	1144	1143	1142	1142	1142	1142
35.0	1103	1108	1106	1104	1103	1103	1103	1103	1103	1103
37.5	1068	1066	1064	1063	1063	1063	1064	1064	1064	1065
40.0	1023	1022	1021	1022	1022	1023	1024	1025	1025	1026
42.5	978.0	977.9	978.8	980.1	981.7	983.6	984.8	986.0	986.7	986.9
45.0	932.7	933.8	936.1	938.5	941.2	943.6	945.4	947.1	947.9	948.0
47.5	887.0	889.7	893.3	897.0	897.1	896.5	896.1	896.3	896.7	897.2
50.0	841.2	845.4	846.5	845.4	844.6	844.6	844.7	845.1	845.5	845.9
52.5	795.3	793.6	792.5	792.3	792.3	792.3	793.3	793.8	794.2	794.6
55.0	739.6	738.9	738.7	739.3	740.0	740.9	741.8	742.5	743.0	743.3
57.5	683.9	684.4	685.2	686.5	687.8	689.1	690.3	691.2	691.8	691.9
60.0	628.5	630.0	631.8	633.8	635.6	637.4	638.9	639.9	640.6	640.6
62.5	573.7	576.1	578.7	581.1	581.9	582.4	582.4	582.7	583.2	583.4
65.0	519.1	521.8	522.4	523.1	523.7	524.3	524.9	525.3	525.8	526.0
67.5	462.3	463.3	464.3	465.3	466.1	466.9	467.5	467.9	468.4	468.6
70.0	403.8	405.2	406.5	407.7	408.7	409.5	410.1	410.6	410.9	411.2
72.5	346.0	347.6	349.0	350.4	351.4	352.2	352.7	353.2	353.5	353.8
75.0	288.7	290.3	291.8	293.2	294.2	294.9	295.4	295.8	296.1	296.5
77.5	231.9	233.3	235.7	237.1	238.5	239.9	241.3	242.7	244.1	245.5
80.0	124.7	98.56	74.37	52.79	34.36	19.56	8.769	2.204	0	2.209
82.5	0	0	0	0	0	0	0	0	0	0
85.0	0	0	0	0	0	0	0	0	0	0

C Range: 0 - 360DEG  
 C Interval: 5.0DEG  
 Test Speed: HIGH  
 Temperature: 25.3DEG  
 Operators: DAMIN  
 Test Date: 2023-08-08

γ Range: 0 - 90DEG  
 γ Interval: 0.5DEG  
 Test System: EVERFINE GO-2000A\_V1 SYSTEM V2.0.286  
 Humidity: 65.0%  
 Test Distance: 13.420m [K=1.0000]  
 Remarks: IL-PN595 4.000K

Photometric Data Table [cd]

87.5	0	0	0	0	0	0	0	0	0	0
90.0	0	0	0	0	0	0	0	0	0	0
G/C	100.0	105.0	110.0	115.0	120.0	125.0	130.0	135.0	140.0	145.0
0.0	1372	1372	1372	1372	1372	1372	1372	1372	1372	1372
2.5	1364	1364	1364	1364	1365	1365	1365	1366	1366	1366
5.0	1356	1356	1357	1357	1357	1357	1358	1358	1359	1359
7.5	1348	1349	1349	1349	1349	1349	1349	1349	1350	1351
10.0	1341	1341	1340	1340	1340	1340	1340	1340	1340	1340
12.5	1333	1332	1332	1331	1330	1330	1329	1328	1328	1327
15.0	1325	1324	1323	1322	1320	1318	1317	1315	1314	1313
17.5	1302	1303	1304	1306	1308	1307	1304	1301	1299	1297
20.0	1278	1278	1279	1280	1282	1284	1286	1286	1283	1279
22.5	1253	1254	1254	1255	1255	1257	1259	1261	1265	1260
25.0	1229	1229	1229	1228	1228	1229	1230	1232	1235	1239
27.5	1204	1204	1203	1202	1201	1200	1200	1201	1203	1207
30.0	1180	1179	1177	1175	1173	1171	1170	1170	1170	1173
32.5	1143	1144	1146	1148	1145	1142	1139	1137	1137	1137
35.0	1104	1105	1106	1107	1110	1112	1108	1104	1102	1101
37.5	1065	1065	1066	1066	1068	1070	1073	1070	1066	1063
40.0	1026	1026	1025	1025	1026	1027	1029	1032	1029	1025
42.5	986.7	986.3	985.1	984.3	983.6	983.3	983.8	985.7	989.5	985.2
45.0	947.7	946.5	944.7	943.2	941.4	939.8	938.7	939.1	941.1	944.7
47.5	898.2	899.4	900.9	902.0	899.1	896.0	893.5	892.0	892.1	894.1
50.0	846.6	847.3	848.4	850.1	852.5	852.4	848.4	845.2	842.0	842.6
52.5	795.1	795.4	795.9	796.9	798.2	800.0	803.0	798.2	791.9	790.8
55.0	743.5	743.4	743.5	743.7	744.0	744.8	746.7	748.4	742.4	738.9
57.5	691.9	691.5	691.1	690.6	689.9	689.9	690.5	689.7	692.1	687.2
60.0	640.4	639.7	638.7	637.4	636.0	634.9	634.3	632.4	633.5	635.9
62.5	583.8	584.0	584.2	584.2	582.3	580.2	578.1	575.8	575.3	576.4
65.0	526.3	526.4	526.3	526.0	525.6	525.2	522.7	519.8	517.8	517.3
67.5	468.8	468.8	468.5	468.0	467.2	466.5	465.6	464.4	461.2	459.0
70.0	411.4	411.3	410.9	410.1	409.2	408.2	407.0	406.0	404.8	401.9
72.5	354.0	353.8	353.4	352.5	351.4	350.3	349.1	347.8	346.4	345.0
75.0	296.6	296.4	295.9	295.0	294.0	292.9	291.7	290.5	289.2	287.7
77.5	156.7	166.8	180.6	197.5	217.4	235.8	234.9	233.9	232.9	231.7
80.0	8.807	19.67	34.56	53.12	74.98	99.62	126.5	155.1	177.6	177.0
82.5	0	0	0	0	0	0	0	21.02	53.80	87.03
85.0	0	0	0	0	0	0	0	0	0	0
87.5	0	0	0	0	0	0	0	0	0	0
90.0	0	0	0	0	0	0	0	0	0	0
G/C	150.0	155.0	160.0	165.0	170.0	175.0	180.0	185.0	190.0	195.0
0.0	1372	1372	1372	1372	1372	1372	1372	1372	1372	1372
2.5	1367	1367	1368	1368	1369	1370	1370	1370	1369	1368
5.0	1360	1361	1362	1363	1364	1365	1367	1365	1364	1362
7.5	1351	1352	1354	1355	1356	1358	1360	1358	1355	1354
10.0	1340	1341	1342	1344	1345	1348	1350	1347	1344	1342
12.5	1327	1328	1329	1330	1332	1335	1338	1334	1331	1328
15.0	1312	1312	1313	1314	1316	1319	1322	1318	1315	1312
17.5	1295	1295	1295	1296	1298	1301	1305	1300	1296	1293
20.0	1277	1275	1274	1275	1276	1279	1284	1279	1274	1272
22.5	1256	1253	1252	1251	1253	1256	1261	1255	1251	1248
25.0	1234	1229	1227	1226	1227	1230	1235	1228	1224	1222
27.5	1209	1204	1199	1197	1198	1201	1206	1199	1195	1194
30.0	1177	1176	1170	1167	1167	1170	1175	1168	1164	1163
32.5	1141	1147	1139	1135	1134	1136	1142	1134	1131	1131
35.0	1103	1107	1106	1100	1098	1100	1106	1098	1095	1096
37.5	1063	1066	1071	1064	1060	1061	1067	1060	1057	1059
40.0	1023	1024	1029	1025	1020	1021	1027	1019	1017	1020
42.5	980.8	980.3	984.1	984.7	978.1	977.7	984.1	976.1	974.9	979.9
45.0	938.1	935.3	937.4	942.6	934.2	932.8	939.2	931.1	930.8	937.7
47.5	894.7	889.4	889.2	895.5	888.7	886.0	892.2	884.3	885.2	890.3
50.0	847.0	842.6	840.0	844.3	841.4	837.3	843.1	835.6	838.0	839.1
52.5	792.9	795.0	789.7	791.6	792.1	786.2	792.3	784.4	788.7	786.4
55.0	738.8	742.8	738.4	736.6	739.3	733.1	739.9	731.4	735.6	731.3
57.5	684.2	685.5	686.4	681.2	686.5	679.4	685.4	677.6	682.9	676.0
60.0	630.3	628.4	632.6	626.5	628.9	624.3	629.7	622.7	625.4	621.0
62.5	576.6	572.0	573.0	571.5	570.6	568.4	572.8	566.7	567.4	566.3
65.0	518.5	516.4	513.9	516.4	512.0	511.5	515.5	510.1	508.9	511.3
67.5	458.5	460.6	455.9	457.4	453.7	454.5	456.9	453.0	450.8	452.7
70.0	399.9	399.7	399.7	397.0	395.7	397.5	398.1	396.2	392.4	392.7
72.5	342.7	340.8	341.4	338.6	338.8	340.2	338.5	339.1	336.3	334.3
75.0	286.2	284.0	282.6	283.2	280.2	280.7	281.0	279.8	278.3	279.2
77.5	230.4	228.7	226.6	224.9	221.7	222.4	224.8	222.9	222.1	222.5

C Range: 0 - 360DEG  
 C Interval: 5.0DEG  
 Test Speed: HIGH  
 Temperature: 25.3DEG  
 Operators: DAMIN  
 Test Date: 2023-08-08

γ Range: 0 - 90DEG  
 γ Interval: 0.5DEG  
 Test System: EVERFINE GO-2000A\_V1 SYSTEM V2.0.286  
 Humidity: 65.0%  
 Test Distance: 13.420m [K=1.0000]  
 Remarks: IL-PN595 4.000K



Photometric Data Table [cd]

80.0	176.1	174.8	172.6	168.0	163.7	163.4	170.9	169.4	170.2	168.4
82.5	119.7	123.1	120.9	115.2	106.6	101.6	119.8	118.7	118.1	117.2
85.0	0	34.13	66.31	68.27	59.64	51.16	69.72	70.00	68.64	67.18
87.5	0	0	0	0	21.62	21.08	16.16	23.36	19.17	0
90.0	0	0	0	0	0	0	1.302	0	0	0
G/C	200.0	205.0	210.0	215.0	220.0	225.0	230.0	235.0	240.0	245.0
0.0	1372	1372	1372	1372	1372	1372	1372	1372	1372	1372
2.5	1367	1367	1366	1366	1365	1365	1364	1364	1363	1363
5.0	1361	1360	1359	1358	1357	1356	1355	1355	1355	1354
7.5	1352	1351	1349	1348	1347	1346	1346	1345	1345	1345
10.0	1340	1339	1338	1337	1336	1336	1335	1335	1335	1335
12.5	1326	1325	1324	1323	1323	1323	1323	1324	1324	1325
15.0	1310	1309	1308	1308	1309	1309	1310	1312	1313	1314
17.5	1291	1291	1291	1291	1293	1294	1297	1299	1299	1297
20.0	1270	1270	1271	1273	1275	1278	1278	1275	1272	1270
22.5	1247	1248	1250	1253	1257	1253	1249	1247	1245	1243
25.0	1222	1224	1227	1231	1226	1223	1220	1218	1217	1216
27.5	1195	1197	1202	1198	1194	1191	1189	1188	1188	1188
30.0	1165	1170	1169	1164	1161	1159	1158	1159	1160	1161
32.5	1134	1140	1133	1128	1126	1126	1127	1128	1130	1133
35.0	1101	1100	1094	1091	1091	1092	1094	1097	1094	1091
37.5	1066	1059	1054	1053	1054	1057	1059	1055	1052	1050
40.0	1023	1016	1013	1014	1017	1019	1014	1011	1009	1008
42.5	977.7	972.3	971.2	974.0	976.7	971.9	968.9	967.1	966.7	966.5
45.0	930.7	927.0	928.2	933.1	928.0	924.8	923.4	923.1	923.8	924.7
47.5	882.3	880.9	884.4	882.5	878.2	877.6	877.9	879.1	881.0	883.0
50.0	833.1	833.9	836.5	830.8	828.1	829.7	832.1	835.1	833.9	831.0
52.5	782.7	786.2	782.4	778.8	778.5	780.8	786.6	782.6	779.5	777.5
55.0	731.2	733.7	728.2	726.8	728.8	731.4	730.4	727.4	725.3	724.1
57.5	679.3	676.6	673.8	675.0	678.2	674.3	673.3	672.2	671.3	670.7
60.0	625.5	619.7	619.8	623.5	619.8	617.5	616.9	617.2	617.3	617.5
62.5	565.9	563.4	566.3	564.4	561.9	561.0	561.2	562.7	563.4	564.2
65.0	507.3	508.0	508.4	505.6	504.5	505.1	506.4	507.8	507.2	506.8
67.5	449.5	452.3	448.7	447.7	448.2	449.8	450.0	449.9	449.7	449.6
70.0	393.4	391.9	390.5	390.9	392.1	392.2	392.3	392.5	392.5	392.5
72.5	335.5	333.4	333.7	334.5	334.7	335.0	335.2	335.5	335.5	335.7
75.0	277.2	277.0	277.8	278.1	278.4	278.6	278.7	278.8	278.8	279.0
77.5	221.7	222.2	222.7	222.9	223.0	222.9	222.7	222.5	204.8	185.8
80.0	168.7	169.1	169.3	169.0	168.5	146.7	119.5	93.98	70.63	49.98
82.5	117.9	118.1	113.9	82.60	50.99	19.89	0	0	0	0
85.0	63.88	32.57	0	0	0	0	0	0	0	0
87.5	0	0	0	0	0	0	0	0	0	0
90.0	0	0	0	0	0	0	0	0	0	0
G/C	250.0	255.0	260.0	265.0	270.0	275.0	280.0	285.0	290.0	295.0
0.0	1372	1372	1372	1372	1372	1372	1372	1372	1372	1372
2.5	1363	1363	1362	1362	1362	1362	1362	1362	1363	1363
5.0	1354	1354	1353	1353	1353	1353	1353	1353	1353	1354
7.5	1344	1344	1344	1344	1344	1344	1344	1344	1344	1344
10.0	1335	1335	1335	1335	1335	1335	1334	1334	1334	1334
12.5	1325	1325	1326	1326	1326	1325	1325	1324	1324	1323
15.0	1315	1316	1316	1317	1317	1316	1315	1314	1313	1311
17.5	1295	1293	1292	1292	1291	1291	1291	1292	1292	1294
20.0	1269	1268	1267	1266	1266	1266	1266	1266	1266	1267
22.5	1242	1242	1241	1241	1241	1240	1240	1240	1240	1240
25.0	1216	1216	1216	1215	1215	1215	1214	1214	1213	1213
27.5	1189	1190	1190	1190	1190	1189	1189	1188	1187	1185
30.0	1162	1163	1164	1165	1165	1164	1163	1161	1160	1157
32.5	1130	1128	1127	1125	1125	1125	1125	1126	1127	1129
35.0	1089	1088	1087	1086	1085	1085	1085	1085	1086	1088
37.5	1048	1047	1047	1046	1046	1045	1045	1045	1045	1046
40.0	1008	1007	1007	1007	1006	1006	1005	1005	1004	1004
42.5	966.7	967.0	967.1	967.1	966.7	966.0	965.2	964.0	962.8	961.7
45.0	925.9	926.6	927.2	927.4	927.1	926.3	925.1	923.3	921.6	919.7
47.5	881.4	879.1	877.4	876.3	875.5	875.2	875.2	875.6	877.0	877.5
50.0	828.6	826.8	825.5	824.6	823.9	823.5	823.3	823.5	824.2	825.3
52.5	775.8	774.6	773.6	773.0	772.4	771.9	771.4	771.3	771.5	771.9
55.0	723.1	722.4	721.8	721.3	720.8	720.2	719.6	719.2	718.8	718.7
57.5	670.4	670.2	669.9	669.7	669.2	668.6	667.8	667.0	666.3	665.6
60.0	617.8	618.0	618.1	618.0	617.6	617.0	616.1	614.9	613.8	612.5
62.5	563.5	562.8	562.1	561.5	560.9	560.5	560.1	559.7	559.5	559.5
65.0	506.4	505.9	505.3	504.8	504.3	503.8	503.4	502.9	502.6	502.2
67.5	449.4	449.1	448.6	448.1	447.6	447.1	446.7	446.2	445.7	445.2
70.0	392.6	392.4	392.0	391.4	390.9	390.4	390.0	389.5	389.0	388.4

C Range: 0 - 360DEG  
 C Interval: 5.0DEG  
 Test Speed: HIGH  
 Temperature: 25.3DEG  
 Operators: DAMIN  
 Test Date: 2023-08-08

γ Range: 0 - 90DEG  
 γ Interval: 0.5DEG  
 Test System: EVERFINE GO-2000A\_V1 SYSTEM V2.0.286  
 Humidity: 65.0%  
 Test Distance: 13.420m [K=1.0000]  
 Remarks: IL-PN595 4.000K

Photometric Data Table [cd]

72.5	335.8	335.7	335.3	334.8	334.2	333.7	333.3	332.9	332.5	331.8
75.0	279.1	279.0	278.7	278.1	277.6	277.1	276.7	276.4	276.0	275.3
77.5	169.8	156.7	147.0	141.0	138.8	140.5	146.0	155.2	167.7	183.2
80.0	32.49	18.48	8.267	2.072	0	2.064	8.208	18.29	32.10	49.27
82.5	0	0	0	0	0	0	0	0	0	0
85.0	0	0	0	0	0	0	0	0	0	0
87.5	0	0	0	0	0	0	0	0	0	0
90.0	0	0	0	0	0	0	0	0	0	0
G/C	300.0	305.0	310.0	315.0	320.0	325.0	330.0	335.0	340.0	345.0
0.0	1372	1372	1372	1372	1372	1372	1372	1372	1372	1372
2.5	1363	1363	1364	1364	1364	1365	1366	1366	1367	1367
5.0	1354	1354	1355	1355	1356	1357	1358	1359	1360	1361
7.5	1344	1344	1345	1345	1346	1346	1347	1349	1350	1352
10.0	1333	1333	1333	1333	1334	1334	1335	1336	1338	1340
12.5	1322	1321	1321	1320	1320	1320	1321	1322	1323	1325
15.0	1310	1309	1307	1306	1305	1304	1304	1305	1306	1308
17.5	1296	1295	1292	1290	1288	1287	1286	1286	1287	1289
20.0	1269	1271	1273	1273	1270	1268	1266	1265	1265	1266
22.5	1241	1242	1244	1247	1251	1247	1243	1242	1241	1242
25.0	1213	1213	1215	1217	1220	1224	1220	1216	1215	1215
27.5	1184	1184	1184	1185	1187	1191	1194	1189	1187	1186
30.0	1155	1154	1153	1153	1153	1156	1161	1161	1156	1155
32.5	1126	1124	1121	1119	1119	1120	1124	1129	1124	1121
35.0	1090	1093	1089	1085	1083	1083	1085	1090	1090	1086
37.5	1047	1050	1053	1051	1047	1045	1045	1048	1054	1048
40.0	1004	1006	1008	1012	1010	1006	1004	1006	1012	1009
42.5	961.0	960.9	962.3	964.8	969.7	966.0	962.1	962.1	965.9	967.6
45.0	917.8	916.4	916.4	917.4	920.6	925.4	919.7	917.0	919.1	924.7
47.5	874.5	871.8	870.0	869.5	870.9	875.0	876.2	871.3	871.3	877.1
50.0	827.1	827.2	823.8	821.8	821.2	823.3	829.0	825.1	821.6	825.6
52.5	772.9	775.0	777.7	774.0	771.3	771.2	775.0	776.7	770.3	773.0
55.0	718.9	720.0	721.7	725.1	721.6	719.3	720.3	722.6	719.4	719.3
57.5	665.0	665.1	666.0	667.8	671.0	667.4	664.7	666.3	668.0	664.9
60.0	611.4	610.6	610.5	610.8	612.5	615.9	610.7	609.7	614.4	610.0
62.5	558.0	556.4	555.2	554.5	554.8	556.6	557.8	553.6	555.2	555.0
65.0	502.1	502.0	500.4	498.6	497.6	497.8	499.9	498.5	496.6	500.1
67.5	444.8	444.4	444.0	443.3	441.3	440.0	440.2	443.0	438.9	440.9
70.0	387.8	387.1	386.4	385.8	385.3	383.3	381.9	382.4	381.5	380.5
72.5	331.0	330.2	329.4	328.6	327.8	326.9	325.1	323.8	323.7	322.0
75.0	274.5	273.8	272.9	272.1	271.2	270.3	269.1	267.3	266.0	266.6
77.5	201.2	217.6	217.0	216.4	215.8	215.0	214.0	212.8	211.1	210.3
80.0	69.36	91.86	116.1	141.4	161.2	161.0	160.7	159.9	158.8	157.3
82.5	0	0	0	19.16	48.66	77.90	105.8	109.1	108.5	107.3
85.0	0	0	0	0	0	0	0	29.56	56.20	58.17
87.5	0	0	0	0	0	0	0	0	0	0
90.0	0	0	0	0	0	0	0	0	0	0
G/C	350.0	355.0								
0.0	1372	1372								
2.5	1368	1369								
5.0	1362	1364								
7.5	1354	1356								
10.0	1342	1345								
12.5	1328	1331								
15.0	1311	1314								
17.5	1291	1295								
20.0	1269	1274								
22.5	1245	1249								
25.0	1218	1222								
27.5	1188	1193								
30.0	1156	1161								
32.5	1122	1126								
35.0	1086	1090								
37.5	1047	1051								
40.0	1007	1010								
42.5	963.8	966.6								
45.0	919.4	921.4								
47.5	873.2	874.3								
50.0	825.3	825.4								
52.5	775.9	774.7								
55.0	724.8	720.3								
57.5	672.2	666.4								
60.0	614.1	611.4								
62.5	555.9	555.4								

C Range: 0 - 360DEG  
 C Interval: 5.0DEG  
 Test Speed: HIGH  
 Temperature: 25.3DEG  
 Operators: DAMIN  
 Test Date: 2023-08-08

γ Range: 0 - 90DEG  
 γ Interval: 0.5DEG  
 Test System: EVERFINE GO-2000A\_V1 SYSTEM V2.0.286  
 Humidity: 65.0%  
 Test Distance: 13.420m [K=1.0000]  
 Remarks: IL-PN595 4.000K

## Photometric Data Table [cd]

65.0	497.1	498.2
67.5	438.7	440.8
70.0	380.9	382.2
72.5	324.6	324.5
75.0	266.4	265.6
77.5	209.7	209.3
80.0	157.4	156.8
82.5	106.7	106.8
85.0	59.85	58.39
87.5	14.60	16.44
90.0	0	0

C Range: 0 - 360DEG  
C Interval: 5.0DEG  
Test Speed: HIGH  
Temperature:25.3DEG  
Operators:DAMIN  
Test Date:2023-08-08

$\gamma$  Range: 0 - 90DEG  
 $\gamma$  Interval: 0.5DEG  
Test System:EVERFINE GO-2000A\_V1 SYSTEM V2.0.286  
Humidity:65.0%  
Test Distance:13.420m [K=1.0000]  
Remarks: IL-PN595 4.000K